

Whatcom Humane Society Statement of Principle

The Whatcom Humane Society believes that all animals, as sentient beings, have value beyond economic measurements and are entitled to legal, moral, and ethical consideration and protection.

Vision

Our community treats all animals with kindness, respect, and compassion.

Mission Statement

The Whatcom Humane Society:

- Advocates for animals;
- Educates the community to promote humane treatment and respect for animals,
- Provides for abandoned, injured, abused or neglected animals.

SHELTER LOCATION

2172 Division Street
Bellingham, WA 98226

HOURS OF OPERATION!

SHELTER SERVICES

(pet licensing, animal lost & found, animal redemptions, donation drop off, pet food bank assistance, humane trap rentals, general inquiries, etc.)

Wednesday – Saturday

10:00 am – 6:00 pm

Sunday – Monday

11:00 am – 5:00 pm

ADOPTION SERVICES

Wednesday – Saturday

11:00 am – 5:30 pm

Sunday – Monday

12:00 pm – 4:30 pm

Closed Tuesdays &

Major Holidays

Phone: (360)733-2080

Fax: (360)733-4746

www.whatcomhumane.org

WILDLIFE

REHABILITATION SERVICES CENTER

(360) 966-8845

*Facility is not open to the public

FARM FACILITY

By appointment only*

farm@whatcomhumane.org

A Message From The Executive Director

Dear Friends,

Happy New Year! I hope you enjoy the new and improved look and layout of PawPrint. We are thrilled to be working with our longtime friends and supporters at the Lynden Tribune for the design and printing of our quarterly newsletter. As the New Year kicked off, I took some time to reflect on how far our organization has come in the past few years and how much more work we need to accomplish in the next several months and beyond.



Laura Clark, Executive Director

When I review our domestic animal statistics (included in this newsletter) I'm so proud of the accomplishments WHS and other animal welfare groups like WeSNiP have made in reducing pet overpopulation in our community. The reduction in overall animals received at our Division Street shelter now allow us to use our limited resources to provide more extensive veterinary care to animals with medical conditions, spend additional time socializing animals with behavior issues and give older animals and those with special needs the chance they need to find permanent, responsible and loving new homes.

The changing trend in our domestic animal population provides us with the perfect opportunity to review and revise our shelter operations to best serve the animals and people who come through the shelter doors. In addition, a major priority this year will be the construction of a new wildlife rehabilitation center on the WHS owned property behind our Division Street shelter. We are so excited about these plans and will be counting on community support to help this long overdue project become a reality. In addition to a large-scale construction project, organizational strategic planning and streamlining daily operations, our staff and volunteers will continue to work tirelessly to expand the programs and services that are so important to the most vulnerable members of the community we serve. It is because of the kind and generous support of the community that our work is possible.

I hope that we can continue to count on your continued support during the year to help provide care to over 4,800 animals in need. Working together, we can make such a difference and positive impact in our community and beyond.

On behalf of the animals that benefit from your friendship, thank you so much.

With Sincere Appreciation,



Laura Clark,
Executive Director



Board of Directors

Janet Hofmann, *President*
Jennifer Sonker, *Vice President*
Mary Meeks, *Secretary*
Ali Alsos, *Treasurer*
Kim Rice
Scott Rice
Victoria Savage
Jane Talbot
Kevin Williamson

Staff

Executive Director

Laura Clark

Administration

Courtney Adams
Chris Sessler

Animal Care / Shelter Services

Danielle Yencopal-Smith,
Operations Manager
Amy Campbell,
Companion Animal Services Manager
Sarah Hansen, *Lead*
Raena Anderson
Cholena Brown
Tina Deming
Julia Lafortune
Maria Prieto-Rivera
Caitlyn Orr,
Foster Care Coordinator
Angelia Reid
William Riley
Mikayla Spencer
Haley Vanderveen
Amy Wilkinson

Wildlife Rehabilitation Services

Alysha Evans, *Manager, Licensed Wildlife Rehabilitator, LVT*
MacKenzie Lacey
Makenna Johansen
Tess Musolino

Animal Control & Rescue / Field Services

Paul Evans, *Manager*
Rebecca Crowley, *Lead Officer*
Michael Anderson, *Dispatcher*
Carrie Anderson
Kyle Berger
Londynn Jensen
Kate Miller
Stephan Neu-Yagle

Finance/Accounting

Dana Berger

Special Events

Dana Browne, *Manager*

Humane Education

Zakia Kaminski

Volunteer & Outreach Services

Carly Brewer, *Manager*

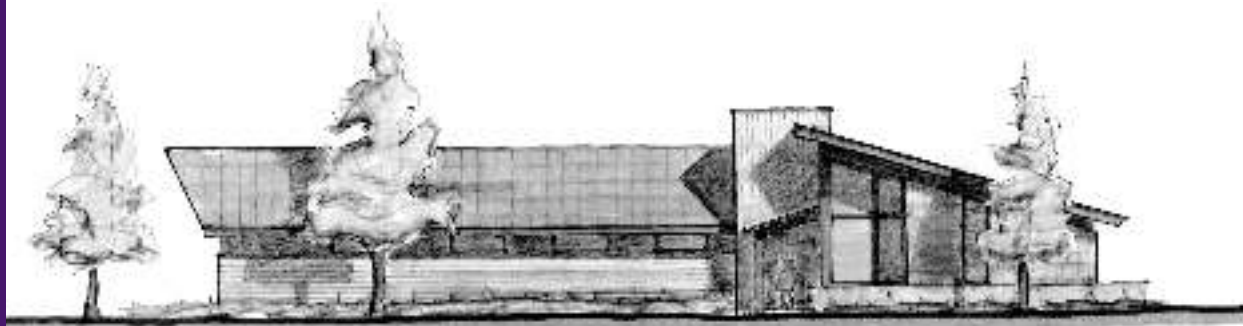
Veterinary Services

Karen Rounds, *DVM*
Monica Mauai-Zamarron, *LVT*

New Wildlife Center

WHS ANNOUNCES PLANS TO BUILD NEW WILDLIFE REHABILITATION CENTER

Building a New Reality for Native Wildlife in Need



NEW WILDLIFE CENTER FOR WHATCOM HUMANE SOCIETY
CAPLITRAC ARCHITECTS, LLC

HISTORY

The Whatcom Humane Society has been providing care and comfort to homeless, unwanted and abused animals in Whatcom County since 1902. 115 years later, our non-profit organization continues our lifesaving work and mission which states: **The Whatcom Humane Society: Advocates for animals; Educates the community to promote humane treatment and respect for animals; Provides for abandoned, injured, abused or neglected animals.**

The Whatcom Humane Society operates a state-of-the art domestic animal shelter in Bellingham, (built in 2013), a 10 acre horse/livestock facility in northeast Whatcom County and a wildlife rehabilitation center in Everson. Over 4,800 domestic, farm and wild animals come through our shelter doors in need of care annually.

CURRENT SITUATION & SERVICES

Since 2014 the Whatcom Humane Society has provided wildlife rehabilitation services to injured and orphaned native wildlife. **The facility is the only full service wildlife rehabilitation center in Whatcom County.**

The WHS wildlife rehabilitation center is licensed to operate by the Washington State Department of Fish & Wildlife. The center employs specially trained staff, including a State licensed wildlife rehabilitator and a licensed veterinary technician. The center is supported by dedicated seasonal and year-round volunteers and interns who assist staff and help maintain the center's daily operations.

The goal at the WHS wildlife rehabilitation center is to rehabilitate and release animals back into their native habitat and educate the community about how to humanely co-exist with wildlife.

This past year, the wildlife rehabilitation center provided medical treatment, care, comfort and services to over 1,600 wild animals including: deer, bald eagles, swans, owls, hawks, opossums, raccoons, skunk, robins, crows, ducks, squirrels, beavers, marine mammals, seagulls and rabbits.



The center is funded entirely by private donations and receives no State, City or County funds.

The center is staffed 7 days a week, 365 days a year.

The current WHS wildlife rehabilitation center facility is located on property owned by the County Parks Department. The County is not interested in selling the property to WHS and unwilling/unable to invest the funds needed to remodel/rebuild the property. The current facility is tiny and cramped, with no ventilation, poor acoustics, crumbling walls, cracked floors, unsafe heating and electrical systems, a failing septic system, lack of natural light and outdoor animal holding/housing areas that flood in the winter and are impossible to disinfect. In addition, the current wildlife rehabilitation center was poorly designed for animals, staff, volunteers (it is an old house with adjoining property), thus severely hampering safety. Crucial areas for veterinary care, work stations, storage, humane education and meeting spaces are non-existent. Travel time for staff and volunteers between the main WHS Division Street facility and the wildlife rehabilitation center is extremely costly and completely inefficient. The option to remodel or rebuild the facility is not realistic or cost effective.

The reality is that the Whatcom Humane Society must build a new wildlife rehabilitation center in order to continue to efficiently operate and provide care and core services to injured, abandoned and abused native wildlife in our community. There simply is no other option.

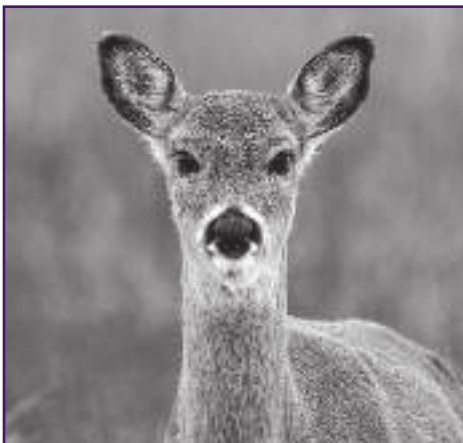
THE NEW FACILITY

Our new WHS wildlife rehabilitation center will be located on adjoining property near our domestic animal shelter on Division Street in Bellingham, on over 12 acres of land. The property, already owned by WHS, has plenty of room to expand as needs arise.

Our new wildlife rehabilitation center will provide humane, stress-free housing for thousands of injured and orphaned wild animals. To respond to the unique physical and emotional needs of each animal species, special areas for mammals, birds of prey, waterfowl, deer and other wildlife will be provided. All animals will have direct access to natural light and air. Special animal shelter specific technologies and materials will be used for acoustics, disease control, ventilation, energy-efficiency and long-term maintenance and upkeep.

Elsewhere in the wildlife rehabilitation center expanded veterinary/surgical areas will enhance available treatment options and will greatly improve our ability to diagnose injuries. Efficient and humane workplaces will support our staff, volunteers and interns. Spacious outdoor animal housing areas and flight cages will be constructed so our wild patients can receive the mental stimulation and physical rehabilitation they need in order to be successfully released back into the wild.

A wildlife ambassador courtyard with a naturalized setting will be constructed to allow our non-releasable humane education wildlife ambassadors the ability to safely educate visitors to the facility.



Designed by local architect Curt Carpenter (who, in collaboration with UC Davis Koret School of Shelter Medicine & Design designed our domestic animal shelter), the facility will be constructed by award winning local contractor The Franklin Corporation (who built our domestic animal shelter). The cost of construction is budgeted to be approximately \$850,000.00. These costs include architect, permitting, site preparation, construction, fencing and landscaping.

Visit our website, www.whatcomhumane.org for additional information and updates about the new wildlife rehabilitation center and how you can support our fundraising efforts.



WHS Annual Animal Statistics

WHS Euthanasia Statistics

Guinea Pig	0	0	0	0	0	0	0	0
Goat	0	0	0	0	0	0	0	0
Goose	0	0	0	0	0	0	0	0
Hamster/Gerbil	0	0	0	0	0	0	0	0
Horse	0	0	0	0	0	0	0	0
Lizard	0	0	0	0	0	0	0	0
Llama	0	0	0	0	0	0	0	0
Mouse	0	0	0	0	0	0	0	0
Rabbit	0	0	0	0	0	0	2	0
Rat	0	0	0	0	1	0	0	0
Sheep	0	0	0	0	0	0	0	0
Sugar Glider	0	0	0	0	0	0	0	0
Turkey	0	0	0	0	0	0	0	0
Snake	0	0	0	0	0	0	0	0
Turtle/Tortoise	0	0	0	0	0	0	0	0
Other	0	0	0	0	0	0	0	0
Total	209	295	180	83	97	72	72	63
Species								
Bird	0	0	0	3	0	0	0	0
Cat	16	14	5	5	3	2	0	2
Chicken/Rooster	0	0	0	0	0	0	0	0
Dog	9	4	2	5	1	0	0	2
Duck	0	0	0	0	0	0	0	0
Ferret	0	0	0	0	0	0	0	0
Fish	0	0	0	0	0	0	0	0
Guinea Pig	0	0	0	0	0	0	0	0
Goat	0	0	0	0	0	0	0	0
Goose	0	0	0	0	0	0	0	0
Hamster/Gerbil	0	0	0	0	0	0	0	0
Horse	0	0	0	0	0	0	0	0
Lizard	0	0	0	0	0	0	0	0
Llama	0	0	0	0	0	0	0	0
Mouse	0	0	0	0	0	0	0	0
Rabbit	0	1	0	0	0	0	0	2
Rat	0	0	0	0	0	0	0	0
Sheep	0	0	0	0	0	0	0	0
Sugar Glider	0	0	0	0	0	0	0	0
Turkey	0	0	0	0	0	0	0	0
Snake	0	0	0	0	0	0	0	0
Turtle/Tortoise	0	0	0	0	0	0	0	0
Other	0	0	0	0	0	0	0	0
Total	25	19	7	13	4	2	0	6
Species								
Bird	6	2	8	2	3	3	1	2
Cat	215	224	185	125	153	108	142	74
Chicken/Rooster	5	4	5	3	10	2	3	1
Dog	26	48	74	47	50	39	83	29
Duck	1	0	0	0	0	0	0	1
Ferret	1	0	0	4	3	0	0	0
Fish	1	0	0	0	0	2	0	0
Guinea Pig	1	0	1	4	1	0	0	2
Goat	2	0	1	0	0	1	1	1
Goose	0	0	0	0	0	1	0	0
Hamster/Gerbil	4	0	3	1	1	1	1	1
Horse	1	0	3	2	2	2	0	0
Lizard	1	0	2	0	0	2	0	0
Llama	1	0	0	0	0	0	0	0
Mouse	0	0	0	0	0	4	9	8
Rabbit	4	5	4	3	3	4	7	8
Rat	2	0	3	1	3	4	7	0
Sheep	1	0	0	0	0	0	0	0
Sugar Glider	0	0	0	0	0	1	0	0
Turkey	0	0	0	0	1	1	0	0
Snake	0	0	0	0	0	0	0	0
Turtle/Tortoise	2	0	0	0	1	1	0	1
Other	0	0	0	0	10	11	9	1
Total	272	283	289	192	241	183	256	121
Species								
Bird	0	0	0	0	0	0	0	0
Cat	6	4	2	2	1	2	0	0
Chicken/Rooster	1	0	0	0	0	0	0	0
Dog	2	0	0	0	0	0	0	0
Duck	0	0	0	0	0	0	0	0
Ferret	0	0	0	0	0	0	0	0
Fish	0	0	0	0	0	0	0	0
Guinea Pig	0	0	0	0	0	0	0	0
Goat	0	0	0	0	0	0	0	0
Goose	0	0	0	0	0	0	0	0
Hamster/Gerbil	0	0	0	0	0	0	0	0
Horse	0	0	0	0	0	0	0	0
Lizard	0	0	0	0	0	0	0	0
Llama	0	0	0	0	0	0	0	0
Mouse	0	0	0	0	0	0	0	0
Rabbit	0	0	0	0	0	0	0	0
Rat	0	0	0	0	0	0	0	0
Sheep	0	0	0	0	0	0	0	0
Sugar Glider	0	0	0	0	0	0	0	0
Turkey	0	0	0	0	0	0	0	0
Snake	0	0	0	0	0	0	0	0
Turtle/Tortoise	1	2	0	1	2	0	0	0
Other	0	0	0	0	0	0	0	0
Total	10	6	2	3	3	2	0	0
Species								
Bird	0	0	1	0	1	0	0	0
Cat	96	101	92	109	107	102	109	124
Chicken/Rooster	1	1	2	0	1	1	3	0
Dog	108	99	102	119	133	137	144	177
Duck	0	2	0	0	0	0	0	0
Ferret	3	0	1	0	1	1	1	1
Fish	0	0	0	0	0	0	0	0
Guinea Pig	0	0	1	1	1	0	2	1
Goat	0	0	0	0	0	0	0	0
Goose	0	0	0	0	0	0	0	0
Hamster/Gerbil	3	2	0	1	2	0	0	2
Horse	0	0	0	1	0	0	0	0
Lizard	0	0	0	0	0	1	0	0
Llama	0	0	0	0	0	0	0	0
Mouse	0	0	1	2	0	0	1	1
Rabbit	3	1	1	1	3	3	2	4
Rat	4	13	4	1	6	8	9	6

Sheep	0	0	0	0	0	0	0	0
Sugar Glider	0	0	0	0	0	0	1	0
Turkey	0	0	0	0	0	0	0	0
Snake	0	0	0	0	0	0	0	0
Turtle/Tortoise	0	0	0	0	0	0	0	0
Other	0	0	0	0	0	0	0	0
Total	218	219	205	235	255	254	271	318
Species								
Bird	2	0	3	3	1	87	4	0
Cat	107	106	102	76	65	77	36	29
Chicken/Rooster	3	1	9	2	3	14	8	3
Dog	23	33	43	36	24	15	23	16
Duck	0	0	0	0	1	1	0	0
Ferret	0	1	0	1	3	1	2	0
Fish	0	0	0	0	0	0	1	0
Guinea Pig	0	0	2	1	2	0	0	22
Goat	0	0	0	0	0	0	1	1
Goose	0	0	0	0	0	0	0	0
Hamster/Gerbil	1	1	4	1	1	1	2	0
Horse	1	1	1	3	0	0	0	0
Lizard	0	0	0	0	0	0	0	0
Llama	0	0	0	0	0	0	0	0
Mouse	11	0	0	0	0	0	1	1
Rabbit	3	2	5	3	14	0	2	7
Rat	1	1	1	5	4	2	0	7
Sheep	0	0	0	0	0	0	0	0
Sugar Glider	0	0	0	0	0	0	0	0
Turkey	0	0	0	0	0	0	0	0
Snake	0	0	0	0	0	0	0	0
Turtle/Tortoise	0	0	0	1	1	1	0	0
Other	0	0	0	0	3	6	3	0
Total	152	146	170	132	122	204	83	86
Species								
Bird	2	10	0	0	11	66	6	14
Cat	93	46	31	37	13	3	0	0
Chicken/Rooster	11	7	2	5	4	2	2	0
Dog	6	7	0	4	0	0	0	0
Duck	0	0	0	0	0	0	0	0
Ferret	0	0	0	0	0	0	0	0
Fish	0	0	0	0	0	0	0	0
Guinea Pig	0	2	0	17	4	4	4	0
Goat	0	0	0	0	0	0	0	0
Goose	0	0	0	0	0	0	0	0
Hamster/Gerbil	0	0	6	0	0	0	0	0
Horse	0	0	0	0	2	0	0	0
Lizard	1	0	0	0	0	0	1	0
Llama	0	0	0	0	0	0	0	0
Mouse	0	0	0	0	0	0	3	0
Rabbit	4	6	3	10	23	5	95	11
Rat	31	17	4	8	2	5	12	0
Sheep	0	0	0	0	0	0	0	0
Sugar Glider	0	0	0	0	0	0	0	0
Turkey	0	0	0	0	0	0	0	0
Snake	0	0	0	0	0	0	0	0
Turtle/Tortoise	1	0	0	4	0	0	0	0
Other	0	0	0	0	0	0	0	0
Total	149	95	46	85	59	85	123	25
Species								
Bird	0	0	0	1	0	0	4	0
Cat	101	121	112	72	66	26	20	23
Chicken/Rooster	8	1	1	0	1	4	5	11
Dog	72	125	82	72	46	24	35	42
Duck	0	0	0	0	0	0	1	0
Ferret	0	0	0	0	0	0	0	0
Fish	0	0	0	0	0	0	0	0
Guinea Pig	2	0	6	0	0	0	0	1
Goat	0	0	0	0	0	0	0	0
Goose	0	0	0	0	0	0	0	0
Hamster/Gerbil	0	0	2	0	0	1	1	0
Horse	0	0	0	1	0	0	0	0
Lizard	0	0	0	0	0	0	0	1
Llama	0	0	0	0	0	0	0	0
Mouse	0	0	0	0	3	0	0	0
Rabbit	3	8	1	4	1	2	9	6
Rat	2	6	2	0	0	1	4	0
Sheep	0	0	0	0	0	0	0	0
Sugar Glider	0	0	0	0	0	0	0	0
Turkey	0	0	0	0	0	0	0	0
Snake	0	0	0	0	0	1	1	0
Turtle/Tortoise	0	0	0	0	0	0	0	0
Other	0	0	0	0	0	0	0	0
Total	188	261	206	153	114	59	80	84
Species								
Bird	0	0	0	0	0	0	0	0
Cat	169	113	87	61	29	40	39	22
Chicken/Rooster	0	0	0	0	0	0	0	0
Dog	0	0	15	8	1	0	0	0
Duck	0							



WHS Annual Animal Statistics

WHS Wildlife Rehabilitation Services Center Intake 2014-2017

Species	2014	2015	2016	2017	Species	2014	2015	2016	2017	Species	2014	2015	2016	2017
African Mud Turtle	0	1	0	0	Evening Grosbeak	3	22	14	4	Porcupine	1	0	0	0
American Alligator	0	0	1	0	Eurasian Collared Dove	0	1	5	2	Purple Finch	2	3	1	15
American Beaver	2	0	4	2	European Starling	28	33	55	47	Purple Martin	0	1	0	0
American Black Bear	0	0	0	1	Flying Squirrel	3	0	0	0	Pygmy Owl	0	0	1	1
American Coot	0	3	4	0	Field Mouse	0	0	0	9	Raccoon	91	66	62	55
American Crow	54	39	37	49	Fox Sparrow	10	6	6	8	Rat	14	0	0	0
American Goldfinch	0	10	1	4	Garter Snake	4	0	0	0	Red Crossbill	0	0	0	1
American Mourning Dove	0	0	6	0	Glaucous Gull	0	8	0	0	Red-breasted Nuthatch	0	1	5	1
American Pipit	0	1	0	0	Glaucous-winged Gull	63	49	46	54	Red-breasted Sapsucker	1	6	6	2
American Robin	88	62	71	72	Golden Eagle	0	0	1	0	Red-naped Sapsucker	0	0	1	0
American Tree Sparrow	0	1	0	0	Golden-crowned Kinglet	0	3	7	4	Red-Throated Loon	0	0	0	2
Anna's Hummingbird	9	20	18	14	Golden-crowned Sparrow	0	2	1	3	Red-winged Blackbird	1	0	1	3
Baby Birds	24	0	0	0	Goldfinch	7	0	0	0	Red-tailed Hawk	12	10	15	14
Baby Bird Eggs	4	0	0	0	Great Blue Heron	6	2	10	10	Rhinoceros Auklet	0	0	1	0
Bald Eagle	12	13	10	13	Great Horned Owl	1	4	3	8	Ring-billed Gull	0	1	0	0
Bandtailed Pigeon	1	0	1	1	Greater Scaup	1	0	1	2	Ring-necked Pheasant	4	3	1	0
Barn Owl	20	10	18	20	Green Heron	0	0	0	5	River Otter	4	0	0	0
Barn Swallow	43	16	18	19	Grouse	1	0	0	0	Rock Pigeon	32	30	42	39
Barred Owl	18	23	19	27	Hairy Woodpecker	1	1	0	0	Roof Rat	0	0	0	5
Belted Kingfisher	1	4	5	4	Harbor Porpoise	0	2	1	0	Rough-legged Hawk	0	1	0	0
Bewick's Wren	0	0	0	1	Harbor Seal	5	12	10	11	Rouen Duck	0	0	1	0
Big Brown Bat	2	2	2	3	Hermit Thrush	1	6	8	6	Ruby-Crowned Kinglet	0	0	0	1
Blackbird	0	0	1	0	Herring Gull	2	0	0	0	Ruddy Duck	2	0	1	0
Black-Capped Chickadee	24	14	16	16	Hooded Merganser	0	0	1	0	Ruffed Grouse	0	0	1	2
Black-Headed Grosbeak	2	0	1	2	Horned Grebe	1	0	1	0	Rufous Hummingbird	9	4	11	12
Black-Legged Kittiwake	1	0	0	0	House Finch	8	10	8	10	Savannah Sparrow	0	1	0	1
Black Rat	0	1	0	0	House Sparrow	5	28	30	21	Saw-Whet Owl	4	0	0	0
Black-tailed Deer	43	54	34	35	House Rat	0	0	12	0	Sharp Shinned Hawk	5	0	4	0
Blue-winged Teal	0	2	0	0	House Wren	0	10	8	2	Silver Haired Bat	3	0	1	4
Bobcat	1	0	0	2	Killdeer	0	0	2	2	Snow Goose	2	0	1	5
Bonaparte's Gull	0	1	0	0	Kinglet	2	0	0	0	Snowshoe Hare	0	0	0	1
Brewers Blackbird	5	3	0	1	Lesser Scaup	2	0	2	1	Song Sparrow	7	5	14	15
Brown Creeper	2	0	1	1	Lineated Woodpecker	0	1	0	0	Sora	1	1	2	2
Brown-headed Cowbird	0	1	1	3	Little Brown Bat	8	12	17	11	Spotted Towhee	8	14	11	8
Brown Rat	0	5	20	5	Long-eared Myotis	0	0	1	2	Spruce Grouse	0	1	0	0
Bufflehead	0	2	1	4	Long-tailed Weasel	0	0	2	0	Stellar's Jay	22	14	12	9
Bullfrog	0	1	0	1	Mallard	18	76	71	45	Stellar Sea Lion	0	1	0	0
Bushtit	2	2	5	7	Marsh Wren	4	0	0	0	Striped Skunk	18	22	4	15
Cackling Goose	1	1	1	1	Meadow Vole	0	1	0	1	Surf Scoter	1	0	1	2
California Giant Salamander	0	1	0	0	Merlin	0	2	1	3	Swainson's Thrush	0	1	0	1
Canada Goose	17	20	16	17	Mew Gull	0	0	0	2	Tanager	0	0	0	0
Cassin's Vireo	0	1	0	0	Mink	1	0	0	0	Tawny-chested Flycatcher	0	1	2	0
Caspian Tern	0	0	0	2	Mole	2	0	0	0	Thayer's Gull	0	0	1	0
Cedar Waxwing	2	7	8	5	Pelagic Cormorant	1	0	0	2	Townsend's Chipmunk	2	7	4	13
Chestnut-backed Chickadee	0	1	1	0	Peregrine Falcon	0	0	2	1	Townsend's Mole	0	5	0	1
Chipping Sparrow	4	5	2	5	Mountain Shrew	0	0	2	0	Townsend's Vole	0	1	1	2
Chimney Swift	1	0	0	0	Mouse	10	0	0	0	Townsend's Warbler	1	0	0	0
Cliff Swallow	11	2	4	0	Mourning Dove	12	7	0	18	Tree Swallow	1	4	7	6
Common Garter Snake	0	0	0	1	Muscovy Duck	0	1	0	0	Turkey Vulture	0	0	0	2
Common Loon	2	0	0	0	Muskrat	2	1	1	0	Unidentified Bird	0	2	0	0
Common Merganser	0	0	1	3	Mute Swan	0	1	0	0	Unidentified Chipmunk	0	0	1	0
Common Murre	1	0	2	1	Northern Alligator Lizard	0	0	1	0	Unidentified Mouse	0	0	2	0
Common Nighthawk	1	0	1	1	Northern Flicker	10	13	16	20	Unidentified Tanager	0	1	0	0
Common Raven	2	1	0	1	Northern Flying Squirrel	0	5	3	2	Varied Thrush	12	9	10	15
Common Yellowthroat	0	0	0	1	Northern Goshawk	0	1	0	0	Vaux's Swift	0	0	0	8
Cooper's Hawk	0	4	2	7	Northern Harrier	2	0	0	0	Violet Green Swallow	1	0	1	2
Cougar	1	0	0	0	Northern Pygmy Owl	0	4	1	0	Virginia Rail	0	1	2	2
Coyote	4	2	3	3	Northern River Otter	0	2	0	0	Vole	2	0	0	0
Creeping Vole	0	0	1	0	Northern Salamander	1	1	0	0	Western Grebe	0	0	0	1
Dark-Eyed Junco	4	12	21	23	Northern Saw-whet Owl	0	4	1	3	Western Painted Turtle	0	0	0	1
Domestic Albino Boa	0	0	0	29	Northwestern Salamander	0	0	0	0	Western Screech Owl	0	0	0	1
Domestic Chicken	3	0	1	3	Oldfield Mouse	0	11	18	17	Western Tanager	2	5	2	2
Domestic Dove	1	1	6	0	Olive-Sided Flycatcher	0	0	1	1	White-cheeked Nuthatch	0	1	0	0
Domestic Duck	3	0	3	12	Opossum	79	57	107	85	White Crowned Sparrow	7	6	3	2
Domestic Goose	0	0	0	1	Orange-crowned Warbler	0	2	0	1	White-winged Scoter	0	2	0	0
Domestic Pigeon	0	0	0	1	Osprey	0	0	1	1	Wing-banded Wren	0	1	0	0
Domestic Turkey	5	2	0	0	Pacific Loon	0	1	0	0	Wigeon	2	0	0	0
Domestic Quail	1	1	0	0	Pacific Tree Frog	0	0	4	0	Wilson's Snipe	2	0	1	0
Domestic Rabbit	0	4	3	11	Pacific Wren	0	0	0	1	Wilson's Warbler	0	1	0	0
Double-crested Cormorant	3	2	3	9	Painted Turtle	1	5	0	0	Winter Wren	9	9	2	0
Douglas Squirrel	14	8	10	2	Pectoral Sandpiper	0	0	1	0	Wood Duck	16	7	18	6
Downy Woodpecker	1	1	4	5	Pi-billed Grebe	1	1	0	0	Yellow-rumped Flycatcher	0	1	1	0
Eastern Cottontail	142	252	322	366	Pileated Woodpecker	1	0	0	2	Yellow Warbler	0	2	1	1
Eastern Grey Squirrel	97	136	142	93	Pine Grosbeak	0	0	1	0					
Ermine	0	1	0	0	Pine Siskin	2	5	3	3					
										Total	1,302	1,459	1,706	1,692



WHS Wish List



Domestic Animal Shelter

- Postage stamps (first class & postcard)
- Copy paper (white, color & cardstock)
- Gift Cards from petStop, Fred Meyer, Hardware Sales, Whatcom Farmer's Coop, Office Depot, Michaels, PetCo, PetSmart & Costco
- New batteries
- New pens and highlighters
- Blankets and towels (no electric blankets)
- Dog Walk Harnesses – Easy Walk & Wonder Walk, front clip especially needed
- Dog collars
- New dog and cat toys
- Creamy peanut butter
- Paper towels
- Leashes
- Small animal treats and toys
- Bags and cans of dog and cat food (can be open or unopened, just not expired)
- Tennis balls
- KONG Toys (L & XL) for shelter dogs
- Catnip



Farm Facility

- Gift Cards for Hardware Sales/Lowe's/ Home Depot, Whatcom Farmers Co-op
- Rubber stall mats
- Vet wrap
- New halters and lead ropes
- New horse treats and toys
- Fly spray
- De-wormer
- Quality new or used tractor
- Bags of animal bedding
- Horse Treats



Wildlife Rehabilitation Center

- Gift Cards for Costco, Fred Meyer, PetCo, PetSmart, Whatcom Farmers Co-op, Hardware Sales and Chris's Squirrels & More (www.squirrelsandmore.com)
- Environmentally friendly hand, dish, and laundry soap
- Bleach
- Paper Towels
- Toilet Paper
- Hand Sanitizer Gel
- Latex Gloves
- Welding Gloves
- Fishing Nets with Poles
- Play-Pens
- Old sheets/pillow cases/fleece blankets
- Non-automatic turn-off heating pads
- Cotton Balls
- Straw Bales
- Pet Carriers (all sizes)
- Tarps
- Medium to large plastic storage bins (clear) with lids
- Feather dusters
- Frozen meats (chicken, liver, heart, venison)
- Frozen fish (small and large sizes)
- Frozen berries
- Soy-free cat and dog food (Costco Brand is good)
- High quality wet canned cat food
- Cracked corn
- Bird seed
- Various nuts (for squirrels)
- Rodents blocks
- Eggs
- Ensure – Vanilla flavor
- Blood worms (cube style)
- Baby Food of all kinds
- Large live mealworms



WHS MONTHLY PET LOSS SUPPORT GROUP



The Whatcom Humane Society's monthly Pet Loss Support Group offers support and resources to help with the loss of a pet. The Pet Loss Support Group meets the 3rd Thursday of each month from 6pm – 7:30pm in the multi-purpose room at the Whatcom Humane Society's Division Street shelter facility.

There is no charge for this group, no reservations needed and you are free to attend as often as necessary throughout your grief process.

The Pet Loss Support Group provides a safe, supportive place where pet owners can share stories about their pet and work through their grief with others who have suffered a similar loss.

Volunteers provide supportive help for those who have been touched by the loss of a pet, are anticipating the death of a pet, are dealing with the difficult decision of euthanasia, have suffered from a lost or stolen pet or are wondering when/if it is time to add another pet to the family.

For more information, please contact Zakia Kaminski at (360) 733-2080, ext # 3116 or email outreach@whatcomhumane.org.

Donations for any of our facilities can be dropped off at the WHS shelter facility Wednesday-Saturday, 10am - 6pm, Sunday - Monday, 11am - 5pm.

For more information, please contact Zakia Kaminski at (360) 733-2080, ext # 3116 or email outreach@whatcomhumane.org. **Check out our amazon.com wish list! Visit amazon.com, "gifts & wish lists"** (and register on Amazon Smile - a % of your purchase will be donated to WHS!) **then type in Whatcom Humane.**

